

ONE⁵

for piano solo

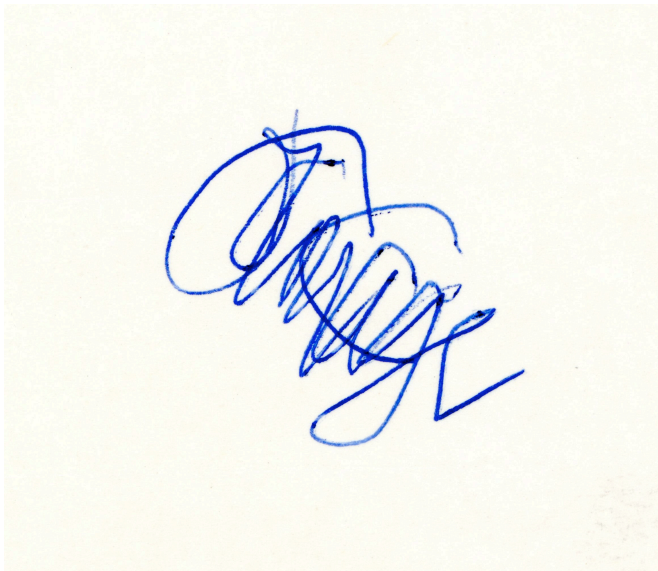
for Ellsworth Snyder

John Cage

May, 1990

New York City

Separate time brackets for each hand,
21 for the left and 24 for the right.



December

In 1998, I visited Radu Malfatti at his home in Vienna.

On his kitchen wall was a bright blue plastic sign with letters about 20cm high.

The sign read:

"REMAIN SILENT"

I asked him about it.

He said:

"You have the right."

(January 2003)

Craig Shepard

John Cage (1912-1992) was an American composer, poet, music theorist, visual artist, performer. A pioneer of chance music, electronic music and non-standard use of musical instruments, Cage was one of the leading figures of the post war avant-garde, and one of the figureheads of experimental arts. In a 1957 lecture, *Experimental Music*, he described music as "a purposeless play" which is "an affirmation of life – not an attempt to bring order out of chaos nor to suggest improvements in creation, but simply a way of waking up to the very life we're living".

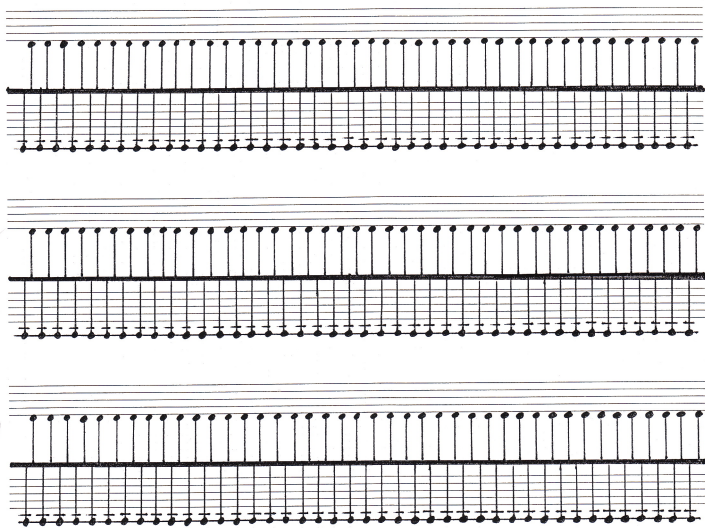
Ellsworth Snyder (1931-2005) was an American abstract painter, professional pianist, conductor and scholar.

Craig Shepard

(*1975 in New Haven, Connecticut, USA) is a composer, trombonist and sound artist.

His most successful work is *On Foot*, a 31-day, 350-mile trek from Geneva to St. Margrethen, Switzerland on which he composed, wrote down and performed a new piece every day.

Craig Shepard lives in Brooklyn, New York City.



L

Pianoworks (2010)

Lee Patterson is a sound artist who investigates hidden sounds within our daily environment. Often, he works outdoors, unlocking the secret sounds within objects and environments that cannot be heard without the aid of microphones or hydrophones.



E

Lee says, "In searching for alternative methods for making sound with a piano, I realised that each piano possesses its own distinct character due to design, manufacture, age, use, and other factors. Such sonic idiosyncracies allow unique possibilities within each instrument. These works are derived from studies conducted upon an old piano in Brussels, and therefore performance is split between the pre-recorded studies from Q-02 and those that are pertinent to the church instrument."

MUSIC WE' D LIKE TO HEAR
Church of St Anne and St Agnes,
Gresham St, London EC2V 7BX

14th July 2010

Piano - Tim Parkinson
Piano - Lee Patterson

E

We are very grateful to Q-02 in Brussels, which provided Lee with a space to work on this ongoing project.

A subsequent performance will be heard at Q-02 on 25th November 2010.

We are also very grateful to the support of the Holst Foundation and the Performing Rights Society Foundation for New Music.



THE HOLST FOUNDATION



PATTERSON